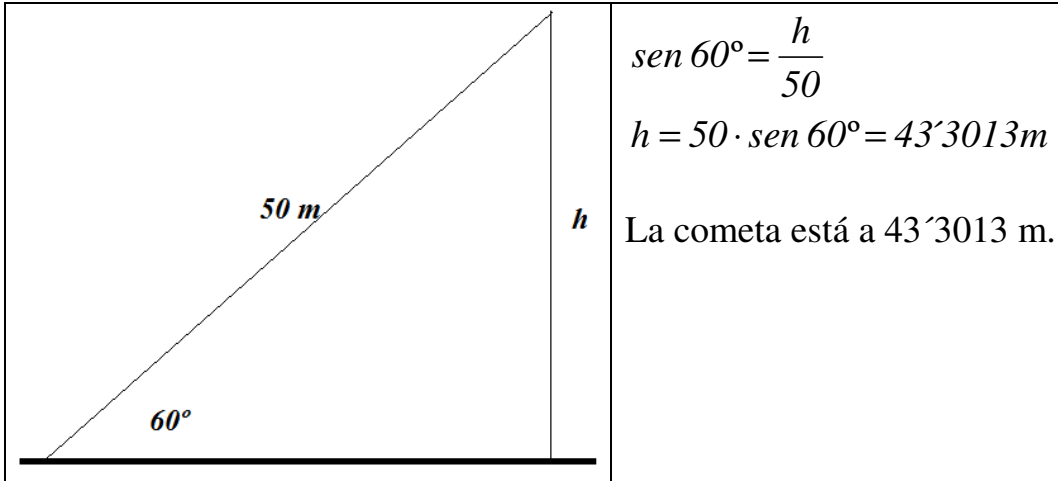
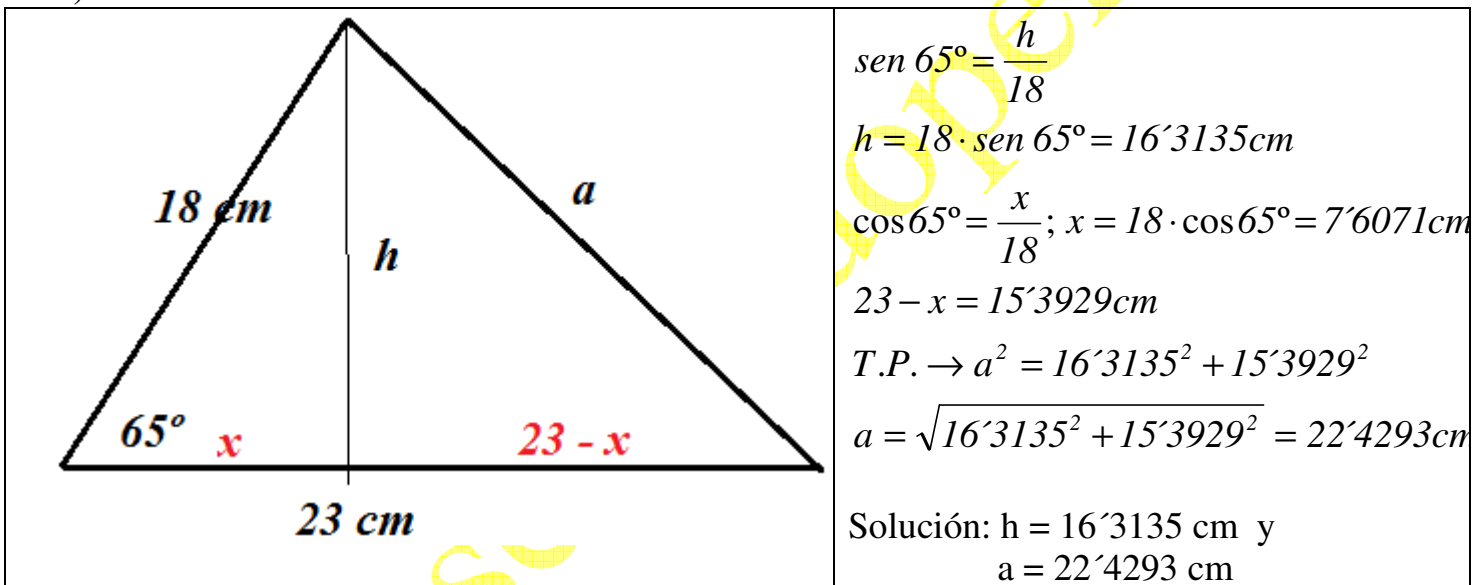


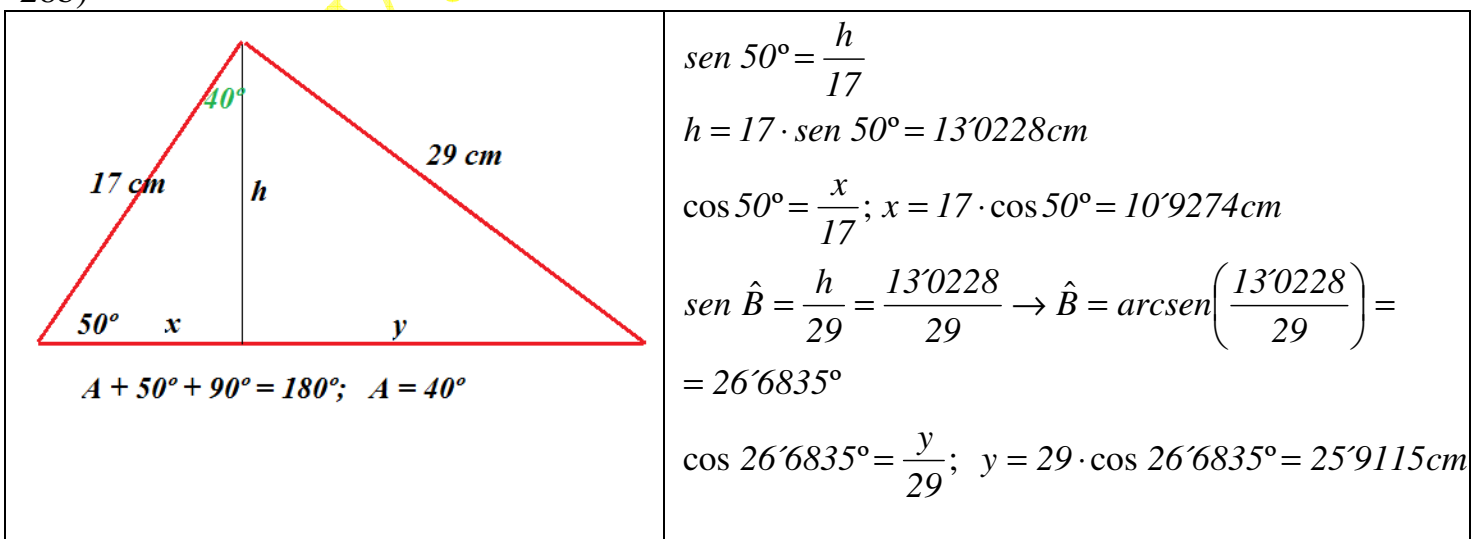
19)



28a)

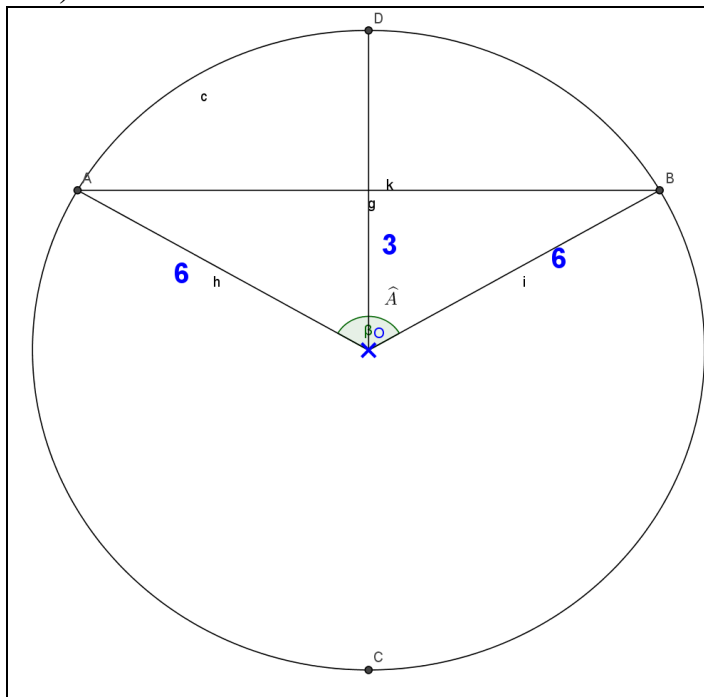


28b)



Solución: $h = 13'0228\text{ cm}$, $x = 10'9274\text{ cm}$ e $y = 25'9115\text{ cm}$.

29)



$$\cos \hat{A} = \frac{3}{6} = 0.5$$

$$\hat{A} = \cos^{-1}(0.5) = \arccos(0.5) = 60^\circ$$

El ángulo AOB es de (2 . 60°) 120°.

Pág. 160, 33 y 35

www.segundoperez.es